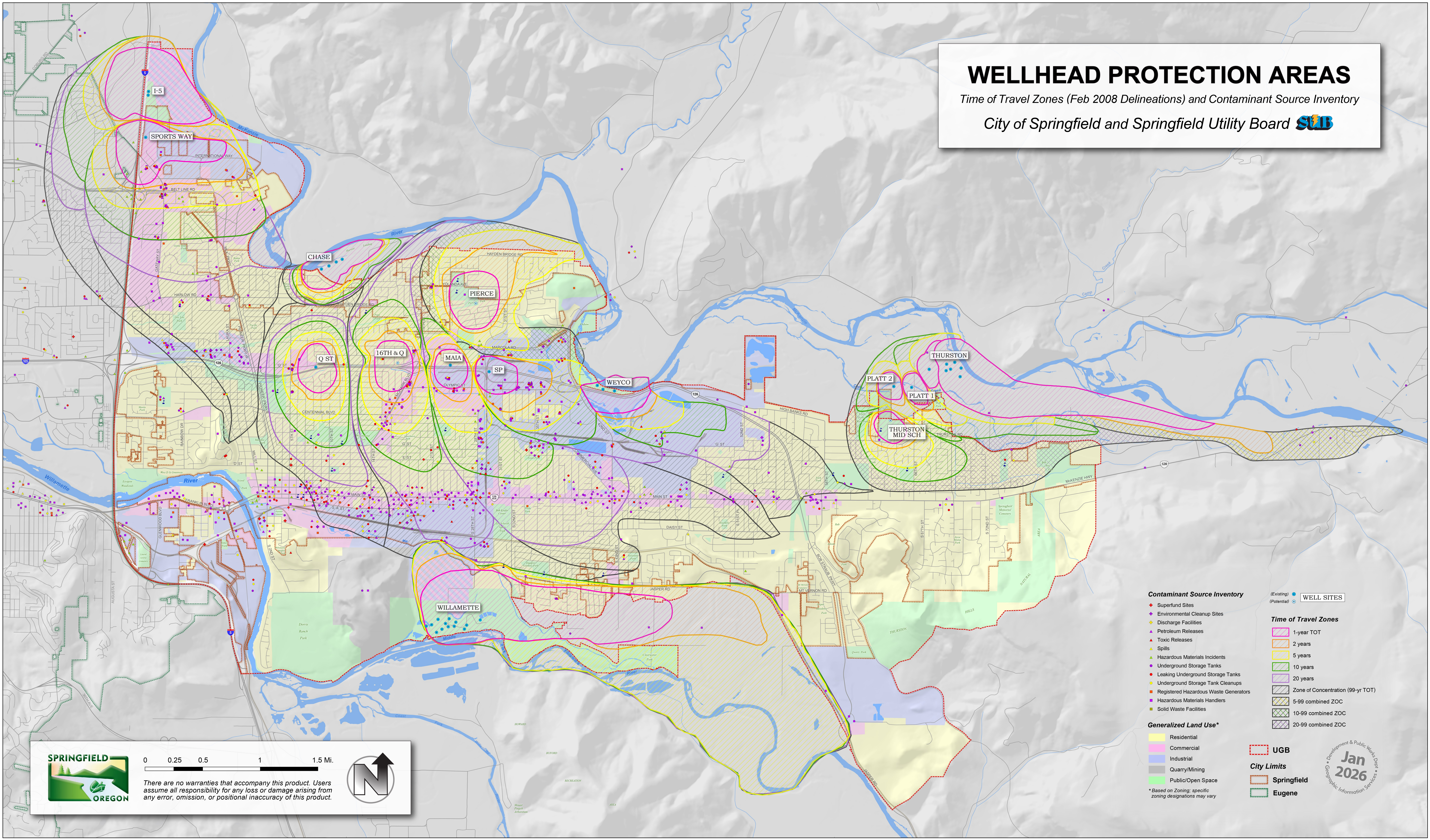


WELLHEAD PROTECTION AREAS

Time of Travel Zones (Feb 2008 Delineations) and Contaminant Source Inventory

City of Springfield and Springfield Utility Board 



Contaminant Source Inventory

- ◆ Superfund Sites
- ◆ Environmental Cleanup Sites
- ◆ Discharge Facilities
- ◆ Petroleum Releases
- ◆ Toxic Releases
- ◆ Spills
- ◆ Hazardous Materials Incidents
- ◆ Underground Storage Tanks
- ◆ Leaking Underground Storage Tanks
- ◆ Underground Storage Tank Cleanups
- ◆ Registered Hazardous Waste Generators
- ◆ Hazardous Materials Handlers
- ◆ Solid Waste Facilities

(Existing) ● WELL SITES
(Potential) ○

Time of Travel Zones

- 1-year TOT
- 2 years
- 5 years
- 10 years
- 20 years
- Zone of Concentration (99-yr TOT)
- 5-99 combined ZOC
- 10-99 combined ZOC
- 20-99 combined ZOC

Generalized Land Use*

- Residential
- Commercial
- Industrial
- Quarry/Mining
- Public/Open Space

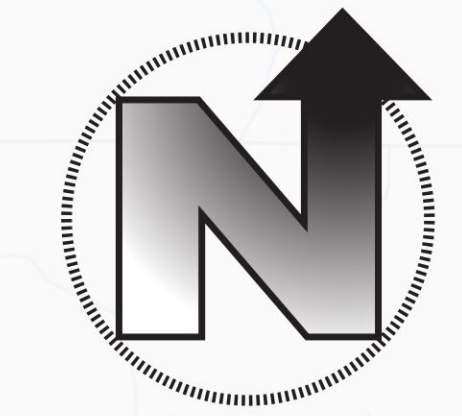
- UGB
- City Limits
- Springfield
- Eugene

* Based on Zoning; specific zoning designations may vary



0 0.25 0.5 1 1.5 Mi.

There are no warranties that accompany this product. Users assume all responsibility for any loss or damage arising from any error, omission, or positional inaccuracy of this product.



Jan 2026
Development & Public Works Dept
Geographic Information Services