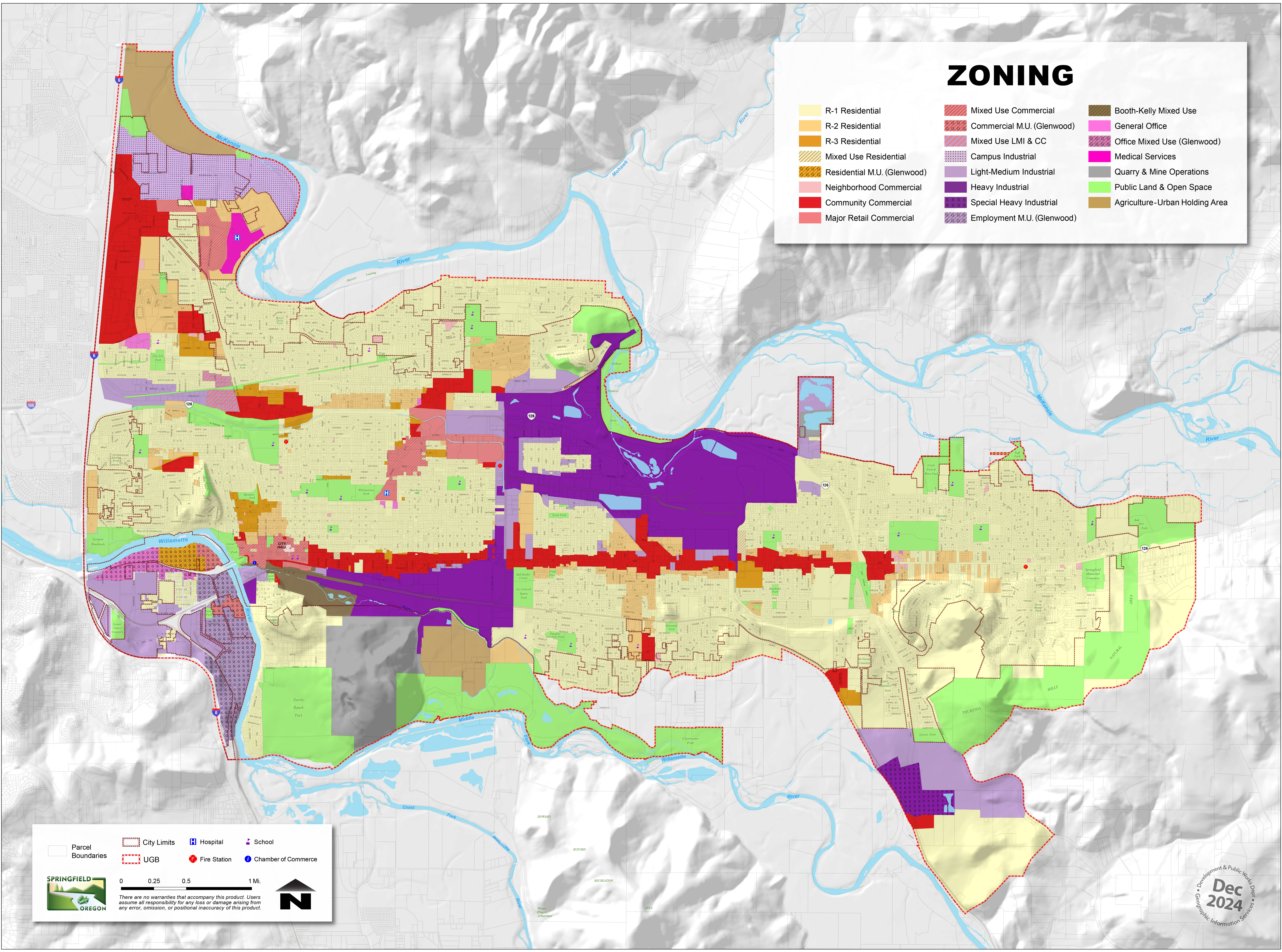


ZONING

- | | | |
|-----------------------------|----------------------------|----------------------------------|
| R-1 Residential | Mixed Use Commercial | Booth-Kelly Mixed Use |
| R-2 Residential | Commercial M.U. (Glenwood) | General Office |
| R-3 Residential | Mixed Use LMI & CC | Office Mixed Use (Glenwood) |
| Mixed Use Residential | Campus Industrial | Medical Services |
| Residential M.U. (Glenwood) | Light-Medium Industrial | Quarry & Mine Operations |
| Neighborhood Commercial | Heavy Industrial | Public Land & Open Space |
| Community Commercial | Special Heavy Industrial | Agriculture - Urban Holding Area |
| Major Retail Commercial | Employment M.U. (Glenwood) | |



Parcel Boundaries
 City Limits
 UGB
 Hospital
 Fire Station
 School
 Chamber of Commerce

0 0.25 0.5 1 Mi.

There are no warranties that accompany this product. Users assume all responsibility for any loss or damage arising from any error, omission, or positional inaccuracy of this product.

Development & Public Works Dept.
Dec 2024
 Geographic Information Services